

# Elinx™ EIR418-2SFP-T

**18 Port Gigabit Industrial Ethernet Switch with 2 RJ-45/SFP Combo Ports for Gigabit Ethernet**

- ✓ 16 10/100 Base-T Ethernet Ports
- ✓ 2 RJ-45/SFP Combo Ports for Gigabit Ethernet
- ✓ 3000V EFT & 6000V ESD Protection
- ✓ Dual 12 to 48 VDC Power Inputs
- ✓ Wide Operating Temperature



The **EIR418-2SFP-T** is an 18 Port Unmanaged Industrial Gigabit Ethernet Switch. In addition to 16 standard copper RJ-45 ports, it has 2 SFP Combo slots to accommodate Gigabit Fiber.

**Small Form-factor Pluggable (SFP) Port:** The SFP Port provides flexibility when planning a network. Modules are available in multiple fiber formats. If an SFP module is not inserted, the associated combo port can be used with standard RJ-45 copper.

**High-Speed Transmissions:** The EIR418-2SFP-T includes a switch controller that automatically senses transmission speed (10/100/1000 Mbps). The RJ-45 interface also auto-detects MDI or MDI-X, eliminating the requirement for a crossover cable. Each port is buffered and supports store-and-forward protocol.

**Dual Power Input:** To reduce the risk of power failure, the EIR418-2SFP-T provides two 12 to 48 VDC power inputs. If the power fails, the switch will automatically use the secondary power input. Also, if the power goes out the corresponding P1 or P2 LED will go out and the Fault LED will light. The contacts for the alarm output will also open.

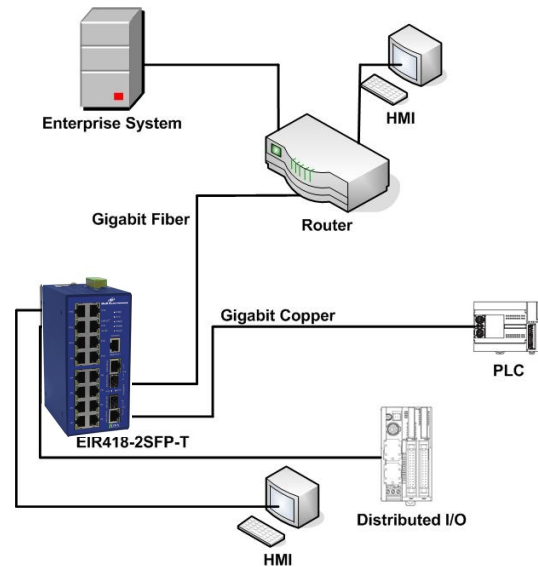
**Flexible Mounting:** The switch features an IP30 metal enclosure that can be DIN or Panel mounted.

**Transient Protection:** The power line input on the EIR405-T offers protection from up to 3,000 V EFT. The Ethernet ports offer up to 6,000 V ESD protection. These features make the switch reliable and suitable for use in harsh electrical environments.

**Wide Operating Temperature:** With an operating temperature of -40 to 75°C (-40 to 167°F), this switch is suitable for use in harsh industrial environments.

**Easy Troubleshooting:** There are two LED indicators for each port that display the link status and transmission speed. Three LED indicators for power (P1, P2 and Fault) show power status. These indicators allow you to quickly diagnose and correct problems and ensure your network remains reliable.

B&B Electronics' Elinx™ Brand Ethernet Switches are your number one choice for reliable performance in harsh industrial environments.



## Ordering Information

| Model Number        | Description                              |
|---------------------|--|
| EIR418-2SFP-T       | Industrial Gigabit Switch (16 CU, 2 SFP) |
| Accessories         |  |
| SFP-100FX-M-2KM-T   | SFP 100Base-FX, MM 2KM, LC               |
| SFP-100FX-S-30KM-T  | SFP 100Base-FX, SM 20KM, LC              |
| SFP-1000SX-M-550M-T | SFP 1000Base-FX, MM 550M, LC             |
| SFP-1000LX-S-10KM-T | SFP 1000Base-FX, SM 10 KM, LC            |
| SFP-1000LX-S-20KM-T | SFP, 1000Base-FX, SM 20 KM, LC           |
| MDR-60-24           | 24VDC, 2.5A DIN Mount Power Supply       |

## Specifications

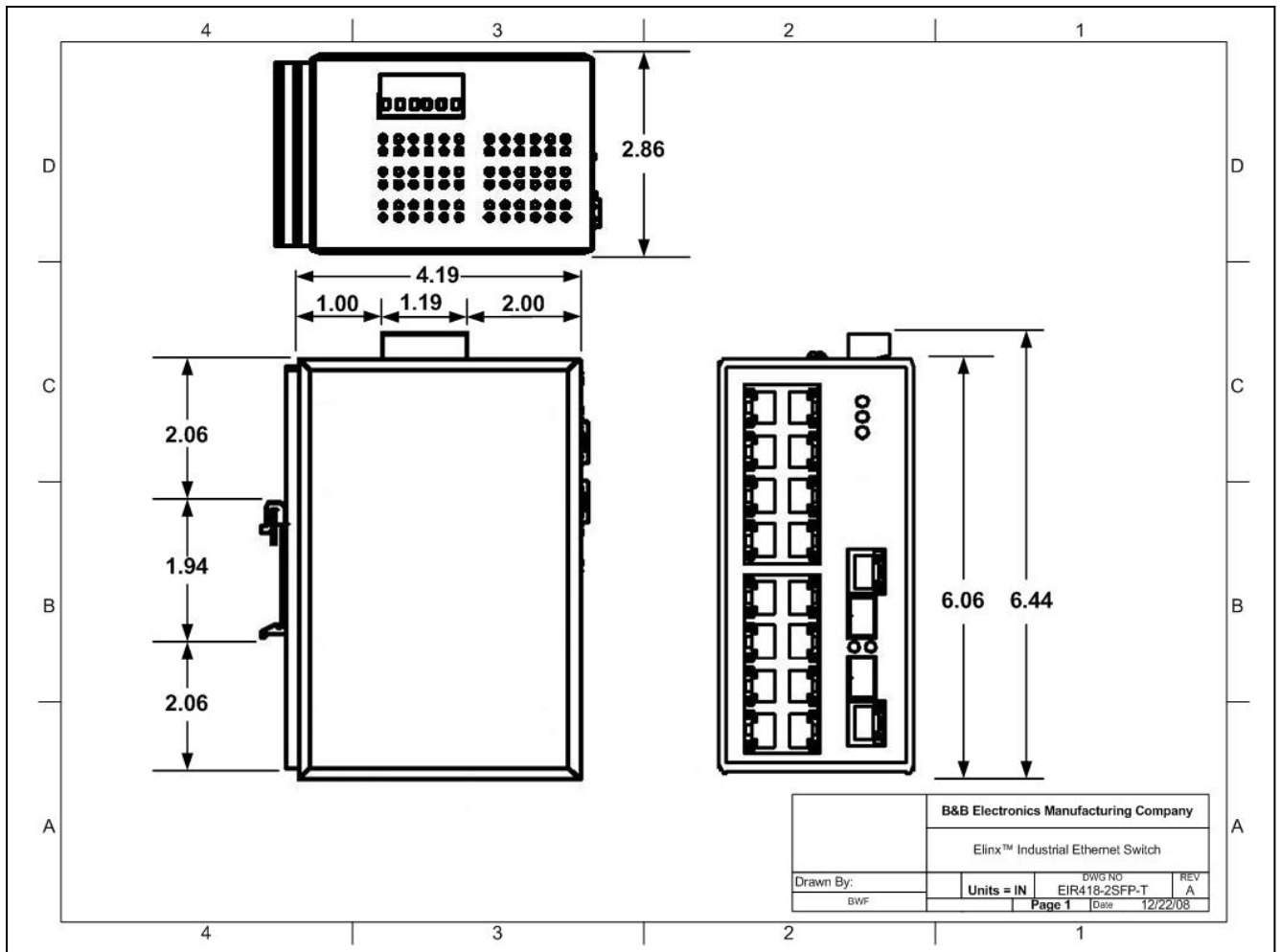
| Regulatory |  |
|------------|--|
| Approvals  | FCC, CE, UL<br>UL File Number: E173795 |
| Free Fall  | IEC60068-2-32                          |
| Shock      | IEC60068-2-27                          |
| Vibration  | IEC60068-2-6                           |



**Specifications**

| IEEE Standards         |   |
|------------------------|---|
| IEEE 802.3             | 802.3. 10Base-T Ethernet  |
| IEEE 802.3u            | 100Base-TX and 100Base-FX Fast Ethernet   |
| IEEE 802.3ab           | 1000Base-T  |
| IEEE 802.3x            | Flow Control and Back Pressure  |
| Network Specifications |   |
| Architecture           | Back-plane (Switching Fabric): 7.2 Gbps<br>Throughput (Full-dup): 10.7 Mpps@64bytes   |
| Transfer Rate          | 14,880 pps Ethernet Port<br>148,800 pps Fast Ethernet Port<br>1,488,000 pps Gigabit Fiber Ethernet                                    |
| Buffer                 | 1 MB  |
| MAC Table              | 8K  |
| Misc                   | Broadcast Storm Filtering<br>CSMA/CD  |
| Interface              |   |
| RJ-45 Ports            | 16 x10/100 BaseT, Auto MDI/MDI-X  |
| ESD Protection         | 6000V ESD Protection  |
| SFP                    | 2 x Mini-GBIC SFP Combo Ports<br>(or 2 RJ-45 10/100/1000 BaseT)   |
| LED Indicators         | P1 (Power 1), P2 (Power 2),<br>Fault (Power Fault), LINK/ACT (SFP Ports)<br>RJ-45 Ports have 2 LED's to indicate LINK<br>and activity |

| Power            |   |
|------------------|---|
| Input Voltage    | Dual 12 to 48 VDC Inputs<br>Reverse Polarity Protection |
| Power Connection | Removable Terminal Block                                |
| Wire Size        | 12 to 24 AWG  |
| Power Use        | 9.0 Watts   |
| Fault Output     | 1 Relay Output – Normally Closed                        |
| EFT Protection   | 3000 V EFT Protection                                   |
| Environmental    |   |
| Op. Temp         | - 40 to 75°C (-40 to 167°F)                             |
| Storage Temp     | - 40 to 85°C (-40 to 185°F)                             |
| Op. Humidity     | 0 to 95%  |
| Mechanical       |   |
| Enclosure        | IP30 Metal Enclosure                                    |
| Mounting         | 35mm DIN Rail or Panel Mount Attachments                |
| Dimensions       | 2.86x4.19x6.06 in (7.26x10.64x15.39 cm)                 |



|                                       |            |               |          |
|---------------------------------------|------------|---------------|----------|
| B&B Electronics Manufacturing Company |            |               |          |
| Elinx™ Industrial Ethernet Switch     |            |               |          |
| Drawn By:                             | Units = IN | DWG NO        | REV      |
| BWF                                   |            | EIR418-2SFP-T | A        |
| Page 1                                |            | Date          | 12/22/08 |

